

BRISBANE - AUSTRALIA



International House Brisbane - ALS

English, Certificates & Diplomas



**International
House**
Brisbane-ALS



**160 schools in
more than 50 countries**

International House
Brisbane-ALS

Why the International House World Organisation?

The International House World Organisation (IHWO) is a network of language schools worldwide that are committed to implementing high standards of quality and innovation in education and training. There are currently over 160 schools in more than 50 countries.

International House was founded in 1953 by John and Brita Haycraft, with the aim of providing an innovative approach to language teaching. IH has remained at the forefront of development in the field of language teaching and in the training of language teachers. International House schools must follow several charters which guarantee school quality.

For more information about International House go to www.ihworld.com

IHWO regularly send leaders in the EFL field to inspect our school; we have always met their standards with good marks.

Why Brisbane, Australia?



Australia is the world's largest island - but smallest continent, and boasts a long history stretching back more than 30,000 years. Australia is unique, and has to be experienced to be believed. 80% of the animals you find here don't live anywhere else in the world! With its fascinating mix of cultures, landscapes and activities, there is something for everybody.

Brisbane has a subtropical climate with warm or hot weather for most of the year, making the outdoor lifestyle we enjoy possible all year round, and Queensland enjoys more winter sunshine and warmth than most other Australian states. You could spend your weekend relaxing under a gum tree, watching an AFL game, or experiencing local and international flavours at a food market.

It is the most relaxed of Australia's cities, and the pace and attitude make it perfect for study. When you are not studying, Brisbane, Queensland's state capital, is the third most populated city in Australia, and has great galleries and museums (like GOMA), entertainment venues (like Suncorp stadium) and plenty to do, see and eat!

Brisbane is the perfect gateway to everything Queensland has to offer – the beaches of the Gold and Sunshine Coasts, the world famous Great Barrier Reef as well as five World Heritage listed areas. If you are feeling adventurous, you could even go on a rainforest or outback adventure!

Our logo



Bright yellow colour represents the 'Sunshine State Queensland'

Circle shape represents us as ONE, 'Together and United'

Our location



We are located in the beautiful city centre. IH Brisbane - ALS is a step away from train/bus stations, city botanic gardens and all the services that Brisbane city centre has to offer. You can also take a walk with your mates to South Bank for a barbeque or visit the outstanding Cultural Centre.

Why choose an English language centre accredited by NEAS?



NEAS is recognised internationally as a body that provides quality assurance monitoring and accreditation of English language centres. The primary goal of NEAS is the maintenance of high levels of quality in the provision of English Language Teaching programs and services by ELT centres to the benefit of the industry as a whole and especially for students. NEAS regularly assesses English language centres for compliance with accreditation requirements to ensure that they continue to uphold NEAS standards and abide by their accreditation conditions.

NEAS provides professional judgment as to whether ELT centres meet and continue to meet the Standards and Criteria for ELT Centres.

The standards look at the following aspects of the ELT centre's operations (among others):

STANDARD A : MANAGEMENT AND ADMINISTRATION
STANDARD B : PREMISES
STANDARD C : SPECIALIST STAFF

STANDARD D : STUDENT SERVICES
STANDARD E : ENGLISH LANGUAGE PROGRAMS AND ASSESSMENT
STANDARD F : EDUCATIONAL RESOURCES AND EQUIPMENT

ELT Centres must show compliance with the standards. NEAS conduct annual audits of our school; we have always met their standards successfully.

IH Brisbane - ALS Awards



"Welcome to Brisbane and to IH Brisbane-ALS for the English experience of a lifetime."

WE AGREE TO TAKE PRIDE IN OUR STUDIES!



Taking control of our learning.

IH Brisbane - ALS can help us,
but we are responsible for our learning.



Treating everyone fairly and with sensitivity.

For everyone to be able to benefit from the classes,
we will respect each other.



Being truthful and sincere.

We are in control of our actions, and will act in the best way possible.



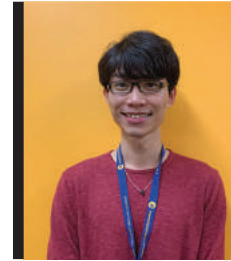
The more you give, the more you get.

We understand the more we put in, the more we get out.



It's why we are here!

We understand that speaking English is good for our ability,
and includes everyone.



“

I tried to study English by myself, but it did not work. I was very afraid to try to speak English. Since I started my studies at IH Brisbane - ALS, I improved my English and my confidence. There are awesome teachers, who are friendly and approachable. I love the school's environment and I enjoy studying here.

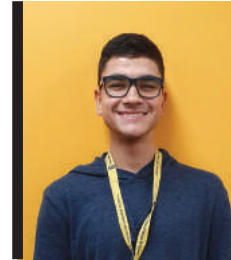
”
- Chia-Yuan



“

Teachers are always friendly and that creates a good atmosphere. On my first day, I was very nervous, and they made it easy for me to start my time at IH Brisbane - ALS. I'm always going to the school's activities. I love the movie and pizza night, where I can make more friends. I love my school, in and out of the classroom.

”
- Ayaka



“

It was a unique experience that will be unforgettable. I came to IH Brisbane - ALS as a student and now I'm leaving as a teacher. From General English to Cambridge FCE/CAE, IELTS and TESOL. Cheers mate!

”
- Marcelo



“

IH Brisbane - ALS is the finest English school in Australia, it provided all the support I was looking for. I wouldn't have been able to achieve my goals without their high teaching standard. From a General English to a Cambridge advanced student, I'm more than happy.

”
- Daniele



“

IH Brisbane - ALS is the best school in Brisbane. I'm very happy to come to the school and study with great teachers. Speak more classes and Writing box are great extra support that students can get. Also the staff are super kind, thank you ^^.

”
- Jeonghyeok

SCHOOL FACILITIES



Student kitchen / Student lounge

Cinema / Entertainment area

Outdoor balcony

Cafe / Library / Wi-Fi



Study rooms / Counselling rooms



24 Classrooms



4 Computer rooms



Toilets / Showers



The 6-week Student Lifecycle

Week 1 or 7

- Assigned to a new Core class
- Assigned to a new Skill class
- Get your copy of Kanganews to see the social events (in & out of school), your topics for the block and the learning outcomes you will achieve.



Week 2 or 8

- You are now studying in the class you were previously assigned to
- Movie and Pizza night



Week 3 or 9

- You are now studying in the class you were previously assigned to
- Level up test on Friday (optional)

Week 4 or 10

- Monday Morning - check to see if you have moved classes!
- Movie and Pizza night



Week 5 or 11

- You are now studying in the class you were previously assigned to
- Pub quiz
- Speaking test (optional)



Week 6 or 12

- Complete a full level up test with your teacher in class
- Join the PRIDE Award ceremony
- Come and join us for an amazing free trip to Noosa, Byron Bay and many more!



*Subject to change

We provide exciting free activities each month!

On the weekends you can visit the theme parks on the Gold Coast, head to the Sunshine Coast for a laidback weekend on the beach or head into the bush and climb the Glasshouse mountains. In the city, you can dance all night at a nightclub, hang out in relaxed bars and pubs or swim the weekend away at Southbank parkland's beach. The Moreton Bay islands are close enough for weekend trips and Byron Bay is only a 2-hour bus ride away. Ask our student services staff for more information about activities at IH Brisbane-ALS.



EXPLORE
MORE



GREAT
MEMORIES



	MONDAY	TUESDAY	WEDNESDAY	THURSDAY	FRIDAY
WEEK 1	Welcome	STICKY PIZZA	Speak English	COMMUNAL	TV Club
WEEK 2	Welcome	Movie & Pizza	Speak English	Speak English	City Botanic Gardens
WEEK 3	Welcome	STICKY PIZZA	Speak English	COMMUNAL	Level up test
WEEK 4	Welcome	Movie & Pizza	Speak English	Speak English	Cooking Club
WEEK 5	Welcome	ALS	Speak English	Pub quiz	Speaking Test
WEEK 6	Welcome	Level Up Test Week	ALS	Pride Award	Let's go to Gold Coast!

*Sample activity calendar. Subject to change



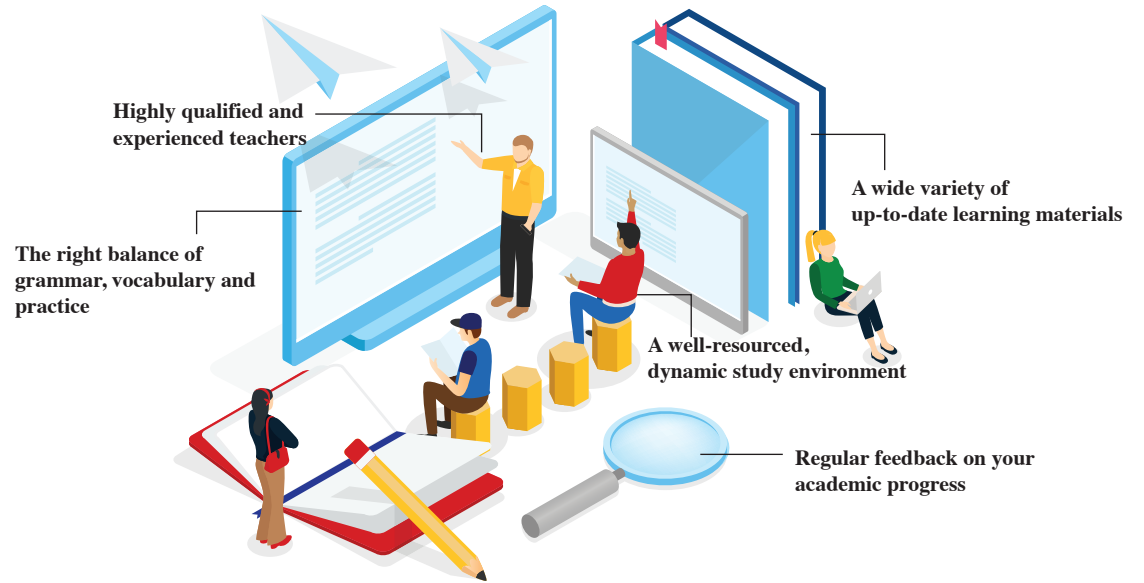
MAKE
FRIENDS





General English

This is the first step of your journey. Studying General English will give you a solid foundation to live your daily life in an English-speaking country and open up doors, providing access to further study, work and travel opportunities. Along the way, you will meet new friends and come into contact with other cultures. The world will come to you!



SAMPLE TIMETABLE - DAY (Subject to change)

Class Time	Speak More	Monday-Thursday	Friday
8:30AM-2:30PM	1 HOUR LUNCH 2:45PM-3:45PM	STUDY 14 HOURS OF CORE CLASSES AND 6 HOURS OF SKILLS CLASSES	STUDY 14 HOURS OF CORE CLASSES AND 6 HOURS OF SKILLS CLASSES
9:30AM-3:30PM	1 HOUR LUNCH 3:45PM-4:45PM		
10:30AM-4:30PM	1 HOUR LUNCH 9:20AM-10:20AM		
		9:30AM-12:30PM & 1:30PM-3:30PM YOU CAN CHOOSE FROM A VARIETY OF SOCIAL, INTERACTIVE AND CREATIVE ACTIVITIES	

SAMPLE TIMETABLE - EVENING (Subject to change)

4:00PM-9:00PM	MONDAY-THURSDAY	STUDY 14 HOURS OF CORE CLASSES AND 6 HOURS OF SKILLS CLASSES
---------------	-----------------	--

*Evening classes are only available for Pre-intermediate or higher English level

In your core classes, you will follow a coursebook, with a different topic each week, learning and practising grammar, vocabulary, reading, writing, listening and speaking.

In your skills classes, your teacher will use a wide variety of engaging materials to give you more opportunity to put into practice what you've been learning in your core class.

THE PLACE TO LEARN ENGLISH

You will be equipped with the tools you need to achieve success in English!
 IH Brisbane - ALS offers students the chance to study up to 29 hours per week;
 20 hours of Core and Skill classes (the minimum you must attend) and 9 more optional hours.

SPEAK MORE

Want to improve your speaking? From Monday to Thursday* you can have extra speaking practice with your classmates, with help and feedback from a teacher.

*Subject to change

WRITING BOX

Want to improve your writing? You can do extra writing tasks in your own time. Put them in the writing box and get feedback from a teacher.

FRIDAY CLASSES

Fridays are optional. You can choose from a variety of social, interactive and creative activities, including: speaking / writing; games and conversation; cooking; excursions; and more! Every six weeks we take you on an adventure!

EXPECT



TO SPEAK ENGLISH ONLY



MIXED NATIONALITY CLASSES



HOMEWORK



TO BE BUSY



TO BE CHALLENGED



TO LEARN

Elementary

Pre-Intermediate

Intermediate

Upper-Intermediate

Advanced

*Subject to availability

Business English | Intermediate

Study Business English to help you get ahead in the workplace.

This specialised 20 hours/week course focuses on the language most commonly used in the corporate world. Through working on a range of relevant business-oriented topics, you will be better prepared for the working world, have better understanding of the Australian work environment, and improve your overall English level.

Course topics include:

- Companies and Leadership
- Strategy and Pay
- Development and Marketing
- Outsourcing and Financing
- Recruitment and Effective Presentations
- Counterfeiting and Markets
- Lobbies and Communication
- Innovation and Logistics

Here is an example of what you will learn in one week:

Topic	Companies & Leadership
Career skills	Use common phrases to talk about your job; learn how to use language for effective communication, i.e. how to make employees/co-workers feel respected and included to ensure effective and timely completion of tasks.
Speaking	Talk about different business structures and express your opinions on them; discuss ways in which successful leaders earn respect; use softening phrases to approach confrontational situations.
Reading	Read an article about developments that threaten the survival of traditional companies and characteristics of different corporations; read an article and learn about different company structures; read about motivation techniques and tactics in leadership.
Listening	Listen to people talk about their jobs; listen to a manager of a company and his opinion on what good leadership is.
Writing	Write a job profile; write a formal e-mail.
Vocabulary	Learn and use vocabulary to describe different types of companies; learn and use business collocations.
Grammar	Use present simple and continuous to talk about changes in corporate structures; use articles to talk about a different management approach.

SAMPLE TIMETABLE (Subject to change)

MONDAY-THURSDAY

8:30AM-2:30PM

Entry requirement: Upper-Intermediate level

Length: 4 weeks - See Start Dates page for intakes

Certificate IV in TESOL

10695NAT - Certificate IV in TESOL (Teaching English to Speakers of Other Languages)

The Certificate IV in TESOL course is for people who want to take their first steps into teaching English. It is an intensive, hands-on, accredited course that will prepare you to teach English in your country, abroad, or even in Australia.

With the guidance of your trainer and through observation of experienced teachers, you will develop your theoretical knowledge of teaching and learning. You will also develop your practical skills, planning and teaching lessons throughout the course.



SAMPLE TIMETABLE - 8 WEEKS FACE TO FACE COURSE

Course topics include:

- How to teach ... (reading / listening / writing / speaking / grammar / vocabulary)
- What makes a good teacher?
- Teaching different levels
- Choosing and adapting teaching materials
- How to correct students' mistakes (error correction)

Expect:

- To speak English only
- A lot of homework
- To be very busy
- To teach your first lesson in week 2
- To be challenged
- To learn

Entry requirement: Upper-Intermediate level

Length: 8 weeks - See Start Dates page for intakes

	Monday	Tuesday	Wednesday	Thursday	Friday
Session 1	Observations Students join General English classes to observe experienced teachers (3 hours)	Grammar Teaching Practice Each student to teach a 30 minute lesson	Teaching Practice feedback	Model reading lesson	Language Awareness 4 – Cohesion
Session 2	Grammar from where? Teaching language from texts		Introduction to receptive skills (introduction to teaching reading)	Error Correction	
Session 3	Using authentic texts and simplifying		Language awareness 5 – Conditionals		
Session 4	Task completion & planning help		Task completion & planning help	Reading Teaching Practice to be set	Task completion & planning help

Example timetable for week 2 (Each week is different) *Subject to change

Cambridge Exam Preparation

We prepare for

Cambridge

English Qualifications™

If you already have a strong foundation in English, you can move on to study an exam preparation course. The Cambridge First (B2) and Cambridge Advanced (C1) certificates are globally recognised for work and study purposes. Not only will you learn the skills and strategies needed to help you take the exam, but with the help of our dedicated teachers, you will also improve your vocabulary, grammar and skills.

You will also have weekly practice tests and regular mock tests in test conditions, with close monitoring, support, tips and in-depth feedback from your teacher.

CEFR IELTS Equivalent

B2 Vantage **5.5 - 6.5**

Cambridge First (B2) is for students at an upper-intermediate level. Aimed at people who can use everyday written and spoken English at an upper-intermediate level. It is an ideal exam for people who want to use English for work or study purposes.

C1 Effective operational proficiency **6.5 - 7.5**

Cambridge Advanced (C1) is for advanced users of English. An exam for advanced users of English. This exam is aimed at people who can use written and spoken English for most professional and social purposes. It is widely recognised for work or study purposes.

EXPECT

- To speak English only
- A lot of homework
- To be very busy
- To do tests every week
- To be challenged
- To learn and improve your English level

SAMPLE TIMETABLE (Subject to change)

Class Time		Monday-Friday
8:30AM-2:30PM	1 HOUR LUNCH	CORE AND SKILL CLASSES 5 HOURS PER DAY

**TALK TO
OUR STAFF FOR
EVENING CLASS
AVAILABILITY**

Entry requirement

Cambridge First: Upper-Intermediate level | Cambridge Advanced: Advanced level

Length: 10 or 12 weeks - See Start Dates page for intakes



GREAT PROGRAMME

QUALITY MATERIALS

COMPULSORY EXAM

CLOSED CLASSES



IELTS Exam Preparation

If you plan to do the IELTS exam to help you access work, study or a visa, our IELTS preparation course will get you ready for the exam. Our teachers are experienced and qualified, with strong track records of helping students reach their IELTS goals. Many of our IELTS students go on to do further study in Australia or other English-speaking countries.

You will study core classes and skills classes. In your core class, you will follow a course-book, with a different topic each week. As well as practising for the IELTS test, your teacher will focus on the grammar and vocabulary that will help you to be successful in the test. In your skills classes, your teacher will introduce you in more depth to the strategies you need to do the test effectively, and of course, you will do lots of practice!

In addition to your core and skills classes, you can also access individual support and guidance from a teacher in the IELTS boost room, do a mock test in reading, writing and listening every week, do mock speaking tests (sign up) with personalised feedback from the teacher, do additional writing tasks and get feedback on them, and borrow books and resources to study further at home.

Weekly Topics

<i>Media</i>	<i>Health</i>	<i>The Built Environment</i>	<i>The World Around Us</i>	<i>Men and Women</i>
<i>Animals</i>	<i>Foods</i>	<i>Language</i>	<i>Arts</i>	<i>Music</i>
<i>Migration</i>	<i>Technology</i>	<i>Geography</i>	<i>Family</i>	<i>Shopping</i>
<i>Natural Disasters</i>	<i>Fashion</i>	<i>Crime</i>	<i>Celebs</i>	<i>Education</i>

* A list of 20 most common IELTS topics - these may vary



SAMPLE TIMETABLE - DAY (Subject to change)

Class Time		Monday-Thursday	Friday - Optional Classes
8:30AM-2:30PM	1 HOUR LUNCH	CORE AND SKILL CLASSES 5 HOURS PER DAY	9:30AM-12:30PM & 1:30PM-3:30PM OPTIONAL EXAM PRACTICE

SAMPLE TIMETABLE - EVENING (Subject to change)

4:00PM-9:00PM	MONDAY-THURSDAY	CORE AND SKILL CLASSES 5 HOURS PER DAY
---------------	-----------------	--

INDIVIDUAL ASSISTANCE

IELTS BOOST ROOM

EXPERIENCED TEACHERS

WRITING PORTFOLIO



Pathway

Prepare for further study in Australia! There are dozens of University and further study courses waiting for you in Brisbane and South East Queensland.

At IH Brisbane-ALS you can improve your English level while getting yourself ready for further education in Australia, without the need to take the IELTS exam.

SOME OF OUR PATHWAY PARTNERS



CRICOS 00244B



CRICOS 01595D



CRICOS 03389E



CRICOS 01737F



CRICOS 03020E



CRICOS 03041M



CRICOS 02634E



CRICOS 00312F



CRICOS 02483D



CRICOS 02898C



CRICOS 02425C



CRICOS 03319G



CRICOS 03576B



CRICOS 03621B



CRICOS 06641J

Pathway students are monitored from the moment you start by our Pathway Coordinator to ensure that you meet and exceed your entry requirements for the next place of study.

For more information, please visit our website,

<https://www.ihbrisbane.com.au/explore-more/pathways-to-further-education/>

*Subject to change

VOCATIONAL TRAINING

Combining engaging materials with excellent trainers, personalised care and modern facilities, we offer a great learning experience, to help you get the qualifications to take you where you want to go.



- + BUSINESS
- + MANAGEMENT
- + RETAIL
- + LEADERSHIP
- + PROJECT MANAGEMENT
- + TOURISM
- + UNIVERSITY PATHWAY
- + AND MORE...

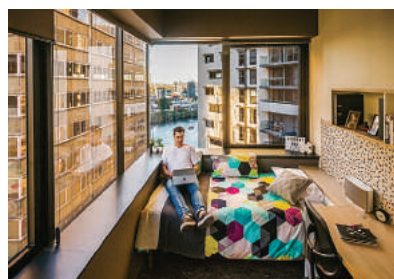
It never gets easier, you only get better!

www.alscertificates.com

Living in Brisbane

Being comfortable whilst you study is very important, so we have a few options available that we can help arrange for you!

Student Accommodation Homestay



Many students also choose to find their own accommodation, either by renting their own place or in a share house. Both of them can also be great options, but please check the information on renting before you do – make sure you know your rights – and there are some good places to start looking in the useful links on our website.

Typical monthly cost of living in Brisbane (prices in Australian dollars)

• Food (Buy own food)	\$350	• Telephone and power	\$84	• Transport (buses, trains etc)	\$180
• Entertainment	\$208	• Other miscellaneous costs	\$250	• Approx average living costs per month	\$1,500

This price information is correct at time of printing, but it is subject to change each year. See our student handbook for up-to-date prices

START DATES AND QLD PUBLIC HOLIDAYS

2020



Month	M	T	W	T	F	S	S
JANUARY	6	7	8	9	10	11	12
	13	14	15	16	17	18	19
	20	21	22	23	24	25	26
	27	28	29	30	31		
FEBRUARY	3	4	5	6	7	8	9
	10	11	12	13	14	15	16
	17	18	19	20	21	22	23
	24	25	26	27	28		
MARCH	2	3	4	5	6	7	8
	9	10	11	12	13	14	15
	16	17	18	19	20	21	22
	23	24	25	26	27	28	29
	30	31					
APRIL	6	7	8	9	10	11	12
	13	14	15	16	17	18	19
	20	21	22	23	24	25	26
	27	28	29	30			
MAY	4	5	6	7	8	9	10
	11	12	13	14	15	16	17
	18	19	20	21	22	23	24
	25	26	27	28	29	30	31
JUNE	1	2	3	4	5	6	7
	8	9	10	11	12	13	14
	15	16	17	18	19	20	21
	22	23	24	25	26	27	28
	29	30					
JULY	6	7	8	9	10	11	12
	13	14	15	16	17	18	19
	20	21	22	23	24	25	26
	27	28	29	30	31		
AUGUST	3	4	5	6	7	8	9
	10	11	12	13	14	15	16
	17	18	19	20	21	22	23
	24	25	26	27	28	29	30
	31						
SEPTEMBER	7	8	9	10	11	12	13
	14	15	16	17	18	19	20
	21	22	23	24	25	26	27
	28	29	30				
OCTOBER	5	6	7	8	9	10	11
	12	13	14	15	16	17	18
	19	20	21	22	23	24	25
	26	27	28	29	30	31	
NOVEMBER	2	3	4	5	6	7	8
	9	10	11	12	13	14	15
	16	17	18	19	20	21	22
	23	24	25	26	27	28	29
	30						
DECEMBER	7	8	9	10	11	12	13
	14	15	16	17	18	19	20
	21	22	23	24	25	26	27
	28	29	30	31			

2021



Month	M	T	W	T	F	S	S
JANUARY	4	5	6	7	8	9	10
	11	12	13	14	15	16	17
	18	19	20	21	22	23	24
	25	26	27	28	29	30	31
FEBRUARY	1	2	3	4	5	6	7
	8	9	10	11	12	13	14
	15	16	17	18	19	20	21
	22	23	24	25	26	27	28
MARCH	1	2	3	4	5	6	7
	8	9	10	11	12	13	14
	15	16	17	18	19	20	21
	22	23	24	25	26	27	28
	29	30	31				
APRIL	5	6	7	8	9	10	11
	12	13	14	15	16	17	18
	19	20	21	22	23	24	25
	26	27	28	29	30		
MAY	3	4	5	6	7	8	9
	10	11	12	13	14	15	16
	17	18	19	20	21	22	23
	24	25	26	27	28	29	30
	31						
JUNE	7	8	9	10	11	12	13
	14	15	16	17	18	19	20
	21	22	23	24	25	26	27
	28	29	30				
JULY	5	6	7	8	9	10	11
	12	13	14	15	16	17	18
	19	20	21	22	23	24	25
	26	27	28	29	30	31	
AUGUST	2	3	4	5	6	7	8
	9	10	11	12	13	14	15
	16	17	18	19	20	21	22
	23	24	25	26	27	28	29
	30	31					
SEPTEMBER	6	7	8	9	10	11	12
	13	14	15	16	17	18	19
	20	21	22	23	24	25	26
	27	28	29	30			
OCTOBER	4	5	6	7	8	9	10
	11	12	13	14	15	16	17
	18	19	20	21	22	23	24
	25	26	27	28	29	30	31
NOVEMBER	1	2	3	4	5	6	7
	8	9	10	11	12	13	14
	15	16	17	18	19	20	21
	22	23	24	25	26	27	28
	29	30					
DECEMBER	6	7	8	9	10	11	12
	13	14	15	16	17	18	19
	20	21	22	23	24	25	26
	27	28	29	30	31		

"If the start date falls on a public holiday, the course will start on the following working business day. The Cambridge exam dates for 2021 have not yet been published - the proposed start dates for 2021 are subject to change, and will be confirmed once the official exam dates are released by the Cambridge Testing Centre."

- Queensland Public holidays
- General English start dates
- Cambridge FCE start dates
- Cambridge CAE start dates
- Level up week
- Certificate IV in TESOL start dates
- Business English start dates
- School closed - Xmas holiday
- School closed - Staff training day



My notes :



www.ihbristane.com.au



www.alscertificates.com



[ihbristaneals](https://www.facebook.com/ihbristaneals)



[internationalhousebristane](https://www.instagram.com/internationalhousebristane)



[international house bristane - als](https://www.youtube.com/internationalhousebristane-als)



116 Adelaide Street, Brisbane, QLD, Australia 4000
PO BOX 13393 George Street, Brisbane, 4003

Phone : +61 7 3229 3389
Email : enrol@ihbristane.com.au

CRICOS Provider 02885G / RTO No 32044

Follow me to English Language Success!

