



Bell
EST 1955

Winter Explorer

St Albans

5 JANUARY - 15 FEBRUARY 2025

1 - 6 WEEKS



Winter Explorer

Overview

Our Winter Explorer course gives students the opportunity to discover British culture while developing their English language skills, through project-based learning activities and interactive learning - both inside and outside the classroom.

On this course, students will:

- ▶ Develop their English in all four areas: reading, writing, listening and speaking
- ▶ Practise new vocabulary, pronunciation and improve their grammar structures, as appropriate to their level
- ▶ Become confident, independent learners with essential 21st century life skills like: communication, critical thinking, collaboration, creativity and cultural awareness
- ▶ Make friends with students from a diverse mix of countries across the globe

Who is this for?

Young learners who want to combine English language study with activities and educational day trips and excursions.

Study Tours

Students take part in three full-day study tours every two weeks to UK destinations. They will also have the opportunity to add optional activities to enhance their experience, available on certain weeks only (see page 6 for more details)

- ▶ **Edinburgh 26 - 28 January** - experience Scottish culture at this famous historic capital, including a tour of Edinburgh castle, ghost walks and Scottish dancing
- ▶ **London** - see the Tower of London, Downing Street, Covent Garden, Science Museum or the Houses of Parliament
- ▶ **Cambridge** - tour the city's famous landmarks and university colleges, including the world famous King's College
- ▶ **Windsor** - explore the world's largest and oldest occupied castle, which is also one of the official residences of King Charles III
- ▶ **Oxford** - Enjoy a tour of this famous university city, and visit the world's oldest university museum.
- ▶ **Stratford-upon-Avon** - See Shakespeare's birthplace, a town with centuries of history

Our approach

English lessons

English lessons include projects that are designed around the school's weekly theme. Small groups of students work together on their projects based on the language knowledge and skills development needs.

Activity programme

Students at Bell 'learn by doing', so the activity programme is an integral part of the course and allows young learners to practise and develop what they have learnt in lessons. Our afternoon activities - electives - are designed to improve communication and confidence while developing academic, creative and active skills.

All Winter Explorer students will also enjoy a wide variety of whole-school activities, such as games, competitions, discos and shows.

Minimum staff to student ratio

1:6

Course summary

Age	11-17
Min. language level	All levels
Course length	1 - 6 weeks
Location	St Albans
Start dates	Sunday 5 January Sunday 12 January Sunday 19 January Sunday 2 February Sunday 9 February

Course components 1 week

- Lessons **15 hours**
- Study tours **1 - 2 days**
- Electives / Academy **9 hours**
- Other activities **9 hours**



Electives

Students choose 2 activities per week. Electives include:

- Art and crafts
- Board games
- British literature
- Cricket
- Dance
- Dodgeball
- Drama
- Film & photography
- Volleyball
- Football
- Health and fitness
- Handball
- Journalism
- Orienteering
- Rounders

Project-based learning

Explore the themes and topics

Project themes have been intentionally designed for students and teachers to take their project in a direction that best meets the group's needs and motivations.

This means that every group of students will learn something different with each student receiving a personalised learning experience. This unique aspect of our Explorer courses ensures they are consistently motivating and engaging, and students often return year after year.

Develop language skills

The content of lessons, study tours and activities are designed with a focus on the project theme, giving the students a holistic experience which accelerates their learning.

Create a personal response

Each project has a theme which begins with a central guiding question to start the students on their learning journey. This guiding question focuses the project and the students work collaboratively towards the production of a tangible project outcome which often combines each of the different aspects of the course.

Practise everywhere

Project-based learning on an Explorer programme is a fully-integrated approach to language learning that provides our students with lots of cross-curricular opportunities for learning everywhere, both inside and outside the classroom.

This means that every group of students will learn something different with each student receiving a personalised learning experience. This unique aspect of our Explorer courses ensures they are consistently motivating and engaging, and students often return year after year.

Present at the end-of-course show

The end of the Explorer project gives students the chance to share their learning experiences with each other in the form of a course show (presentation).

Course includes:



Tuition, study materials and course portfolio



Residential accommodation and all meals



A full programme of educational and social activities



A full programme of study tours



Comprehensive insurance



Comprehensive supervision by qualified staff



Transfers to and from designated airports/stations on scheduled arrival and departure days *



Free internet access



Free laundry service

* For arrival and departures between 10am and 5pm or advised train times

Course fees

Our course fees are fully-inclusive of tuition, accommodation, airport transfers and learning materials - so everything is taken care of before your student arrives.

+ EXTRA OPTION

Business Leadership Academy

This Academy option develops a wide range of language, business, leadership and life skills.

This **two-week** programme consists of eighteen hours of business leadership input from specialist EFL-qualified Business Studies teachers and collaborative group work as part of the Bell Business Challenge.

Minimum language level: B1 intermediate or above.*

*Please note: if a student joins the academy and does not have the required language level, we reserve the right to move them from the academy to our elective programme without a refund.

Example Learning Outcomes:

- Language**
 - Learn key business vocabulary
 - Develop grammar and pronunciation skills
 - Practice speaking, listening, reading and writing skills in a collaborative fast-paced environment
- Business studies**
 - Writing a business plan
 - How to bring products to market
 - Develop financial management skills
- Life and leadership**
 - Develop valuable communication and teamwork skills for life in the workplace. Learn negotiation strategies and techniques used by the most effective leaders and managers
 - Grow their presentation skills and confidence in public speaking by delivering a sales pitch as part of the Bell Business Challenge

£225 per 2 weeks of academy
5 January - 18 January
19 January - 1 February



WEEK	THEME	ARRIVAL DATE													
1	Winter Wonderland	Sunday 5 January	6 WEEKS	5 WEEKS	5 WEEKS	4 WEEKS	4 WEEKS	3 WEEKS	3 WEEKS	2 WEEKS	2 WEEKS	2 WEEKS	1 WEEK		
2	Imagine Tomorrow	Sunday 12 January											1 WEEK		
3	Kingdom of Culture <i>(including 3 day trip to Edinburgh)</i>	Sunday 19 January											1 WEEK		
4													1 WEEK		
5	Dynamic Discoveries	Sunday 2 February											1 WEEK		
6	Magic, Myths and Legends	Sunday 9 February											1 WEEK		
TOTAL (£)			£7440	£6285	£6385	£5130	£5230	£5180	£4075	£4025	£2410	£2870	£2310	£1205	£1155

ARRIVAL DATE	DEPARTURE DATE	WEEKS	FEES*	ADDITIONAL OPTIONS:
Sunday 5 January Sunday 12 January	Saturday 11 January Saturday 18 January	1 - 2	£1205 per week	Wednesday 8 January - Theatre Trip - £95 Thursday 9 January - Arsenal Stadium Tour - £70
Sunday 5 January	Saturday 1 February	1 - 4 †	£5130 **	Sunday 12 January - London trip, Westfield Shopping Centre and Stratford White City - £29 Thursday 16 January - Chelsea Stadium Tour - £70
Sunday 19 January	Saturday 1 February	3 - 4 †	£2870	Sunday 19 January - London trip, Westfield Shopping Centre and Shepherd's Bush - £29
Sunday 2 February Sunday 9 February	Saturday 8 February Saturday 15 February	5 - 6	£1155 per week	Thursday 6 February - Chelsea Stadium Tour - £70

* In addition to course fees, all bookings are subject to a £95 registration fee
 † Includes trip to Edinburgh, Scotland (26 - 28 January provisional dates)
 ** Early bird price - book before September 2024

We intend to run the proposed activities and excursions, but we will always be guided by the latest government regulations, so they may be subject to change. However, we will always keep you informed of any changes.

Time	Activity	Activity	Activity	Activity	Activity
08:00 - 08:45	Breakfast				
08:45 - 09:00	Morning Meeting				
09:00 - 10:30	Language Test/ Language Lesson	Language Lesson	Full Day Study Tour	Language Lesson	Language Lesson
10:30 - 11:00	Break		LONDON	Break	
11:00 - 12:30	Orientation/ Language Lesson	Electives/ Academies	Walking tour of Landmarks	Language Lesson	Electives/ Academies
12:30 - 13:30	Lunch				
13:30 - 15:00	Electives/ Academies	Electives/ Academies	Harry Potter World	Optional Stadium Tour - Emirates Stadium or St Albans Half-Day	Language Lesson
15:00 - 15:30	Break				
15:30 - 17:00	Language Lesson	Language Lesson		Course Presentation	
17:00 - 17:30	House Time				
18:00 - 19:30	Dinner and free time				
	Ice Breakers	Don't Forget the Lyrics	Wheel of Fortune	The Cube	Black Tie Disco
			Optional Theatre Trip or Popcorn Premier		Photo Challenge
19:30 - 21:00					
21:00 - 21:30	House Meeting				



WEEK 1:

Winter Wonderland

SUNDAY 5 JANUARY – SATURDAY 11 JANUARY

In this project students will delve into the enchanting world of winter through the lens of Great British literature and traditions. From exploring the role of winter in literary classics to encountering the customs and festivities celebrated during this magical season, students will engage in a dynamic learning experience culminating in a visit to the iconic Harry Potter World.

Example learning outcomes

Students will learn key vocabulary related to winter themes, literature, and cultural traditions and learn how to accurately use comparative and superlative forms for comparing different authors or literary works and modal verbs such as 'can', 'could', 'may', 'might', 'will', 'would', 'shall', and 'should' to express ability, possibility, permission, and obligation when discussing interpretations of literary texts or cultural customs.

Students will improve reading comprehension and critical analysis skills through the exploration of literary texts as well as improve fluency through presentations, discussions, and collaborative activities.

Students will develop their cross-cultural understanding exploring the diversity of winter traditions celebrated in different cultures, fostering appreciation and understanding of cultural practices beyond their own as well as they will develop critical thinking by analyzing and evaluating the significance of winter in literature and culture.

Types of activities could include:

- Analyze an excerpt from "The Lion, the Witch, and the Wardrobe" by C.S. Lewis and discuss how winter serves as a backdrop to shape character development and plot dynamics.
- Find out, compare and contrast your traditions and customs with another student.
- Write an essay examining the portrayal of winter in selected works of Great British literature.

Week includes:

Study Tour: London

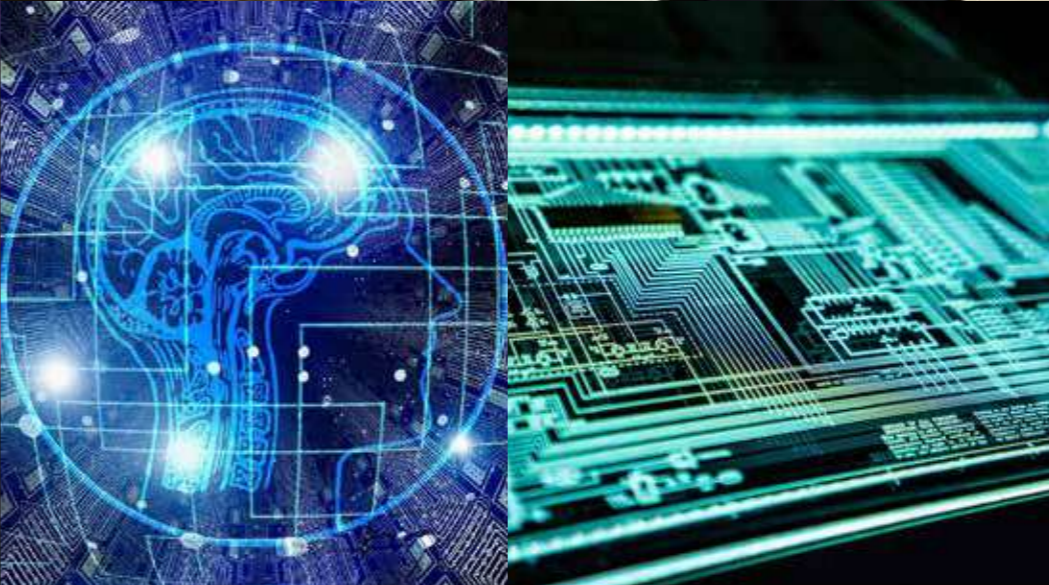
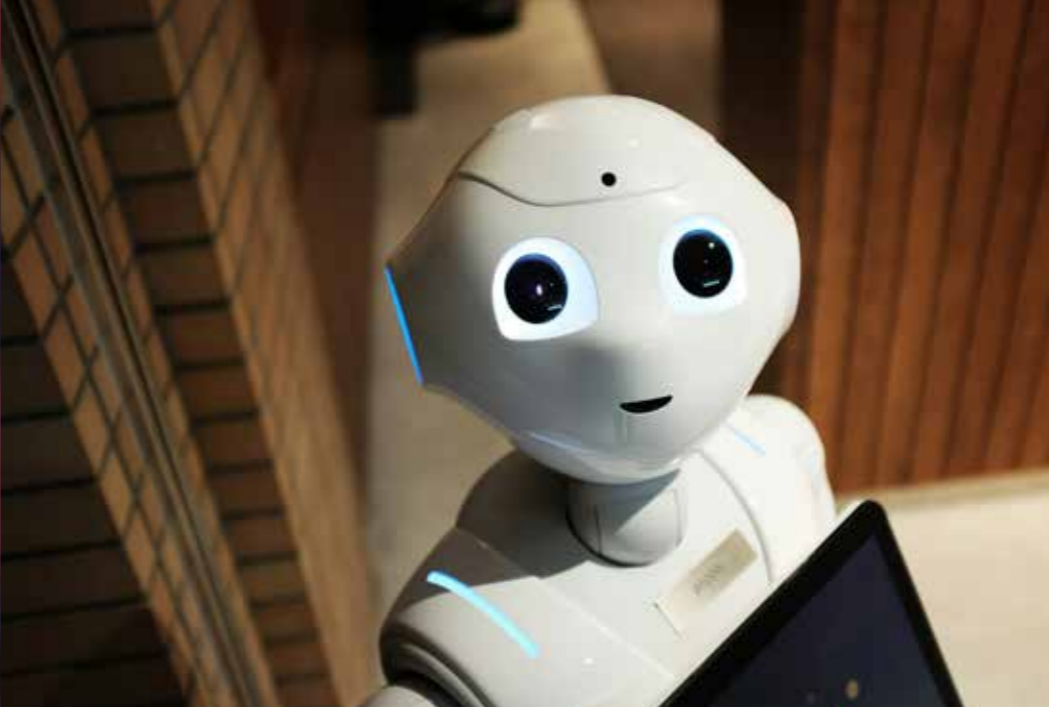
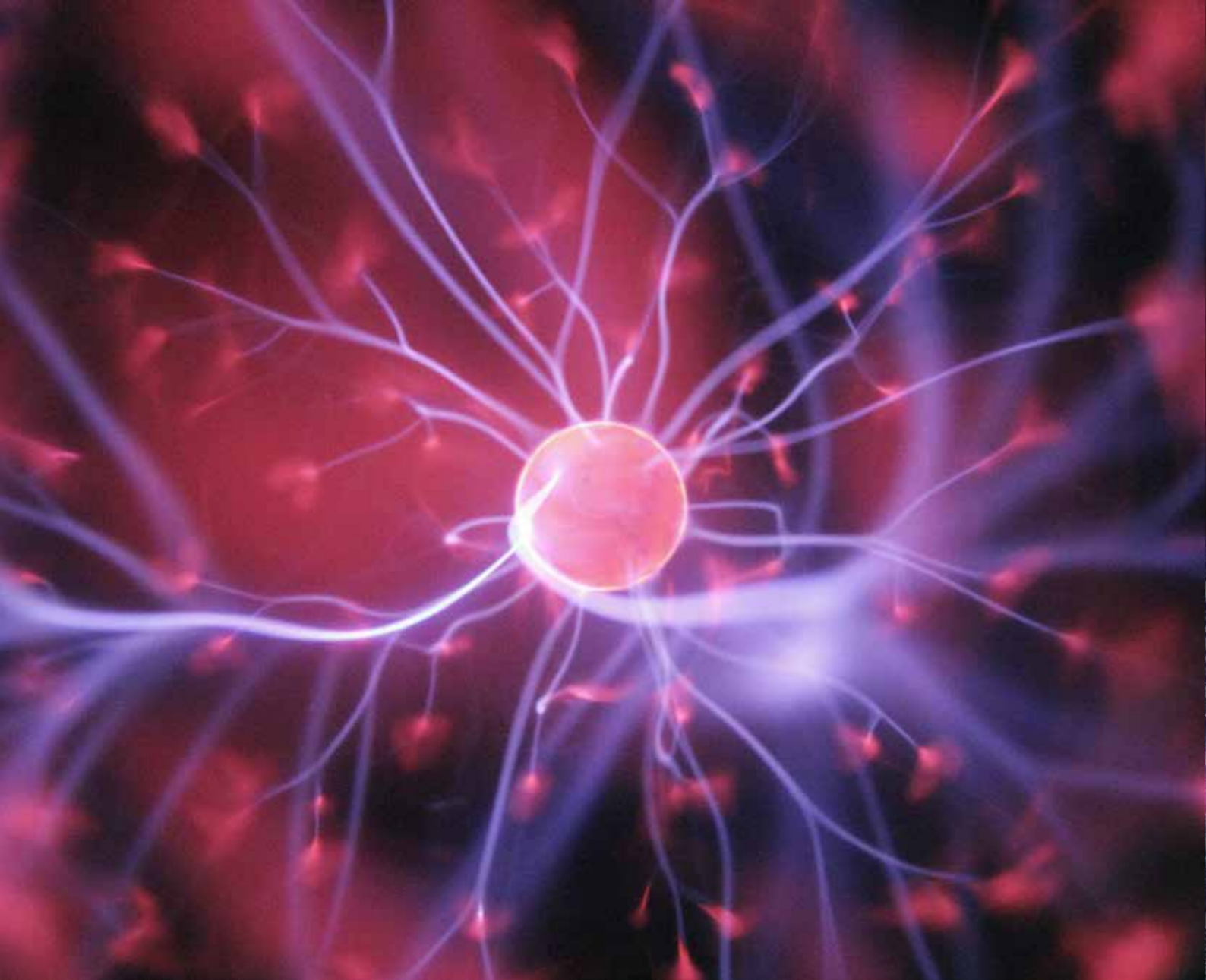
- Harry Potter World

Stratford Upon Avon

Areas of Transdisciplinary Study:

- Sociology
- History and Geography
- Literature





WEEK 2:

Imagine Tomorrow

SUNDAY 12 JANUARY – SATURDAY 18 JANUARY

In this project students will embark on a journey to explore the pivotal role of science in shaping our present and future. By learning about cutting-edge technologies and visionary innovations and engaging in hands-on activities and collaborative projects, students will enhance their language skills while gaining a deeper understanding of the transformative power of science and technology in shaping the future of our world.

Example learning outcomes

Students will learn vocabulary related to scientific concepts, technological innovations, and ethical considerations and learn to accurately use future tenses like “will”, “going to”, future perfect, and future perfect continuous to speculate about future advances.



Students will improve their ability to comprehend and analyze complex scientific texts such as academic articles as well as express ideas and visions for the future with clarity and precision.



Students will develop and apply logical reasoning and analytical skills to evaluate evidence and solve real world challenges as well as learn to demonstrate the flexibility and resilience needed in order to solve contemporary issues.



Types of activities could include:

- Researching and presenting on emerging technologies such as artificial intelligence, biotechnology, and renewable energy, making predictions on their potential applications and implications for the future.
- Listening to a podcast about pressing global challenges, such as climate change or healthcare accessibility, and discuss the way science can help the world solve these issues.
- Carrying out debates and discussions on ethical issues related to scientific advancements, exploring diverse perspectives and practising critical thinking skills.

Week includes:

Study Tour: London

- Science Museum

Cambridge

Areas of Transdisciplinary Study:

- Technology and Sustainability
- Ethics
- Social Sciences



WEEK 3 & 4:

Kingdom of Culture

SUNDAY 19 JANUARY – SATURDAY 1 FEBRUARY

In this project students will engage in a dynamic blend of interactive lessons and informative study tours to deepen their understanding of the UK's rich cultural heritage. Students will gain insights into the unique identities of England and Scotland, while also reflecting on broader themes such as cultural diversity, global citizenship, and the interconnectedness of cultures. Students will learn about the complexities of England's cultural identity and the enduring legacy of its historical landmarks. The course will inspire them to become informed global citizens who value and respect cultural diversity.

Example learning outcomes

Students will learn key vocabulary related to UK landmarks, British culture, and travel experiences and learn how to accurately use comparative and superlative forms for comparing and contrasting lifestyle in the UK to their home countries.



Students will improve fluency and confidence in conversational English through immersive language practice during guided tours and cultural activities.



Students will develop their cross-cultural understanding and communication skills.



Areas of Transdisciplinary Study:



Sociology



Geography



History and Architecture

Types of activities could include:

- Design a virtual tour and multimedia presentation highlighting the history, architecture, and cultural significance of the Tower of London and/or Edinburgh Castle.
- Carry out group discussions and debates on topics such as British traditions, cultural diversity and global citizenship.
- Carry out interactive language games and role-playing activities simulating real-life scenarios encountered during sightseeing in London and/or travelling in Scotland.

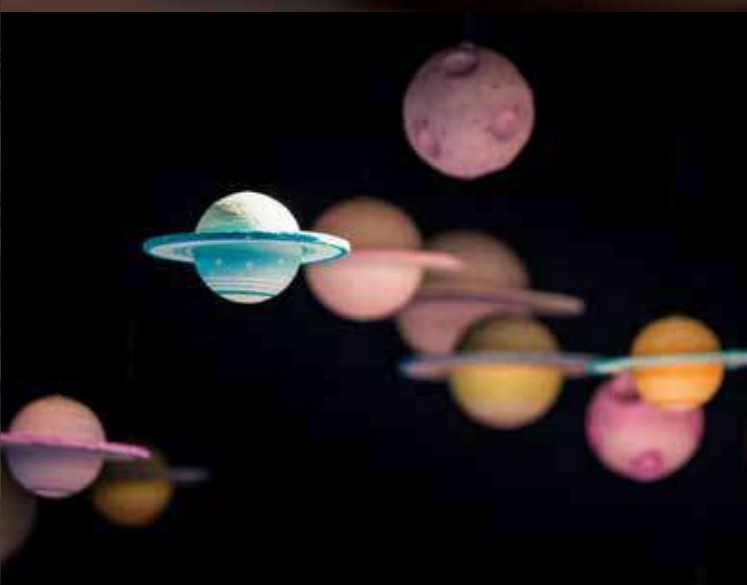
Week includes:

Study Tour: 3 day trip to Edinburgh

- Museum of Scotland
- Edinburgh Castle

London

- Tower of London
- Big Bus Tour



WEEK 5:

Dynamic Discoveries

SUNDAY 2 FEBRUARY – SATURDAY 8 FEBRUARY

This project opens the students' eyes to the world by learning about great adventurers and explorers. Students will also be encouraged to explore Britain and discover as much as they can throughout their experience in the UK. Through a variety of engaging activities, students will enhance their language skills, critical thinking abilities, and intercultural competence.

Example learning outcomes

Students will expand vocabulary related to the topics of adventure, exploration, and geographical landmarks and will learn to accurately use past, present, and future tenses accurately when recounting historical events, describing current experiences, and discussing future plans. They will learn how to accurately use modal verbs to express possibility, necessity, obligation, and ability in hypothetical scenarios and discussions about potential future adventures.

Students will effectively use functional language to express ideas clearly and persuasively in both written and verbal forms.

Students will learn to appreciate diverse perspectives and understanding the interconnectedness of global history and culture.

Types of activities could include:




- Researching great explorers and discoveries from the past.
- Carrying out a comparative study of recent discoveries of Earth-like planets.
- Researching the geography, culture, and historical significance of regions visited by renowned adventurers and/or in the UK.

Week includes:

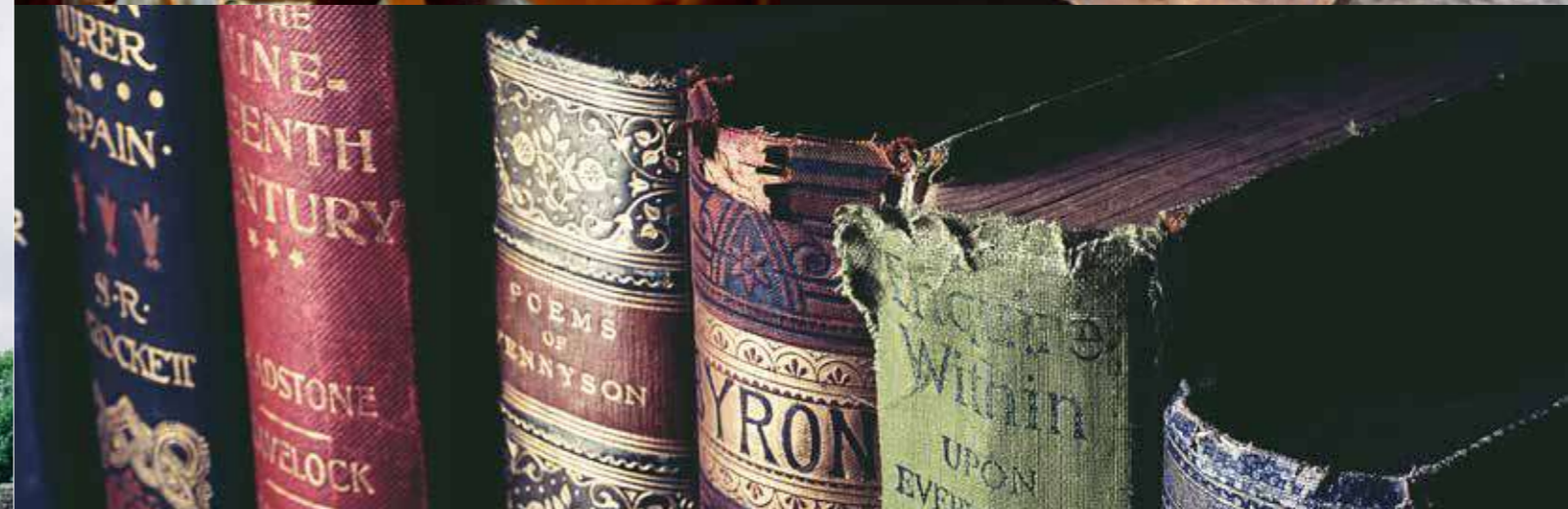
Study Tour: London

- The British Museum

Areas of Transdisciplinary Study:

-  Sciences
-  Literature
-  History & Geography





WEEK 6:

Magic, Myths and Legends




SUNDAY 9 FEBRUARY – SATURDAY 15 FEBRUARY

In this project students will embark on a journey to explore the rich tapestry of literature, fantasy, and mythology from JK Rowling to William Shakespeare. By engaging in a variety of activities designed to encourage critical thinking and creativity, students will explore the themes of heroes, legends, and magic. They will analyze literary works, participate in discussions, and collaborate on creative projects inspired by the course content.

Example learning outcomes

- ✔ Students will learn vocabulary related to magic, myths, and legends, including terms specific to fantasy literature and film and learn to accurately use grammatical structures to write stories i.e. narrative tenses, adverbs and adjectives, and linking and sequencing words.
- ✔ Students will learn functional language to give personal opinions, express likes and dislikes, and make recommendations.
- ✔ Students will improve their creative writing skills by working on their fictional stories.

Areas of Transdisciplinary Study:

-  English Literature
-  Media Studies
-  History

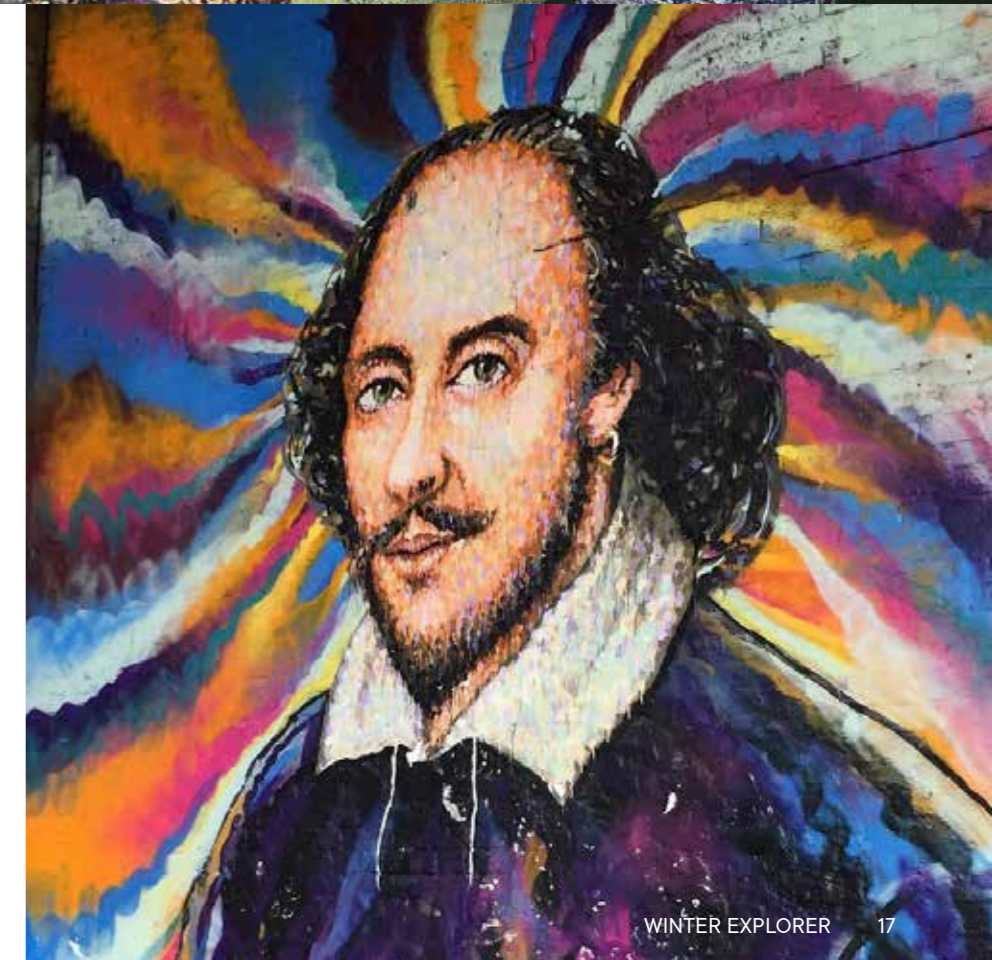
Types of activities could include:

- Watching film adaptations of literary works and engaging in discussions on how filmmakers bring magic, myths, and legends to life on the screen, examining differences and similarities between the two mediums.
- Discussing key themes, characters, and plot devices in selected works of literature, including Harry Potter and Shakespearean plays in small groups.
- Learning to write a fictional story using descriptive language and narrative tenses.

Week includes:

Study Tour: London

- Harry Potter World





Facilities

- Bright, spacious classrooms, many with interactive whiteboards
- Free wireless internet
- Dining room
- Art room
- Disabled access/facilities
- On-site sports fields
- Peaceful, countryside setting



Accommodation

- Separate accommodation blocks for boys and girls
- A dedicated houseparent in every boarding house



Travel

FREE transfers* on scheduled arrival and departure days from:

- London Heathrow 47 km
- London Stansted 60 km
- St. Pancras 31 km

* For flight arrival/departures between 10am and 5pm or specific trains. Custom transfers can be arranged – ask us for details.

Transfers

Free transfers will be available for arrivals and departures between 10am and 5pm, depending on student travel requirements.

Any students travelling as an Unaccompanied Minor are subject to an additional £60 fee (per single journey).

Important:

Arrival details for each student must be sent to Bell at least 10 working days before the start of course to guarantee an airport transfer. Please also notify us at least 7 working days if there are any changes to your departure date.

Bell St Albans

London Heathrow 47km
London Stansted 60km
St. Pancras 31km

Bedrooms

All bedrooms contain bunk beds. Every room also has a wardrobe, chest of drawers and chair. **Please note:** towels and hair dryers are not provided.

Bathrooms

Shared showers and toilet facilities are situated at convenient points throughout the accommodation.

Housekeeping

Bedrooms and bathrooms are cleaned regularly. Fresh bed linen is provided every week.

Meals

Full board (breakfast, lunch and dinner are served at the school and a packed lunch is provided on study tours). As well as a variety of global cuisines, students will experience traditional British meals such as roast dinners and fish and chips.

Laundry

Free laundry service for machine washable clothes once a week. Bell cannot take responsibility for any items lost or damaged during the laundry process.

Pocket Money

£150 per week (recommendation).

Electricity

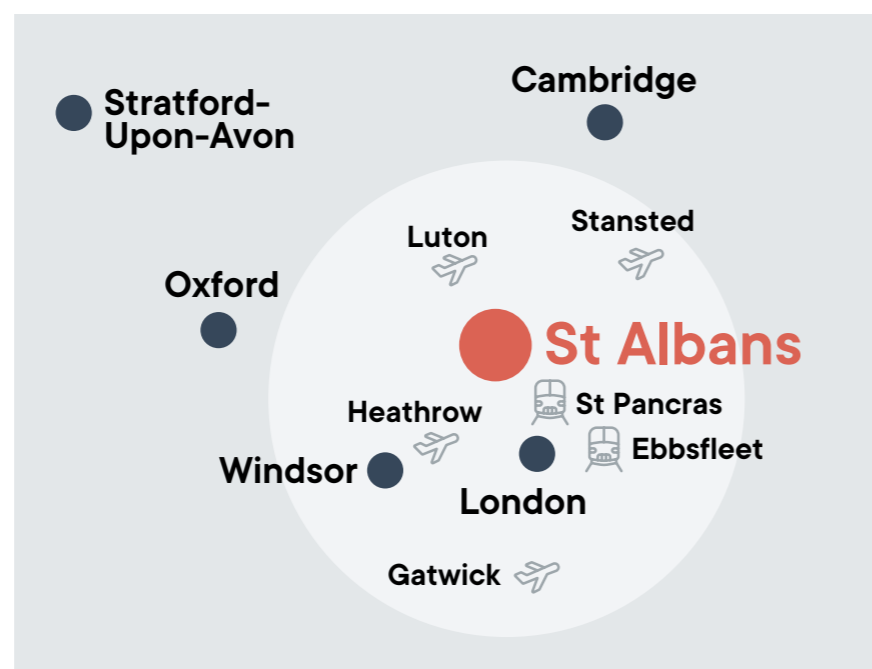
220-240V, 50Hz AC. UK-type 3-pin plugs are used.

Curfew

Lights are switched off between 22:30 and 23:00. Students are not allowed outside the school site without supervision.

BELL ST ALBANS	10AM - 5PM	OUT-OF-HOURS
London Heathrow	Free	£95
London Stansted	Free	£160
St. Pancras	Free*	£160

* based on advised train times
prices valid for a one-way journey



Supervision

- ✓ School team available 24 hours a day, all week
- ✓ Houseparents responsible for student welfare
- ✓ Houseparents available for support and advice at any time
- ✓ Staff:Student ratio is at least 1:6
- ✓ All onsite staff are police checked

Local Area Information

- ✓ Nearest town: St Albans is a 15-min drive with shopping centre and supermarket
- ✓ Nearest train station: St Albans City Train Station
- ✓ Nearest airport: Luton is a 20-min drive
- ✓ Travel time to London: 1 hour and 30 mins by train and 41 mins by taxi

Maximum Capacity

180 students

available at
Bell St Albans

For more information:



Visit our website
bellenglish.com



Contact us
Call +44 (0)1223 275598



In your own country
Get in touch with your local
Bell representative

[bellenglishstudents](https://www.facebook.com/bellenglishstudents)
 [bell_english](https://www.instagram.com/bell_english)
 [bellenglish](https://www.tiktok.com/@bellenglish)

